

# MaxiTrack

## INSTRUCTIONS & METHOD STATEMENT FOR MAXITRACK

### OFFLOADING

- Do not stack pallets of mats unless the ground is firm and level enough to do so safely, in which case they should only be stacked up to a maximum of two pallets high.

### HANDLING

- Use at least two persons per mat.
- Keep your back straight, and do not overreach.
- Mats can weigh in excess of 40kg when muddy.
- Wear appropriate PPE including gloves.

### PREPARATION

- For installations on soft ground that will last for several weeks, it is advisable to use a geotextile membrane underneath the mats to help suppress mud.
- For installation over tarmac or paving, use BaseTrack underlay sheeting to protect the surface from marking by tread lugs.



### INSTALLATION

- When operating as a team of three, with two persons placing the mats and one tightening the bolts, the person tightening may not be able to keep up with those laying. However, if you install just the three corner bolts on each mat, the whole team can then go back over the trackway filling in the missing bolts.
- The mats can be half staggered (stretcher bond) or joined at 90° to suit the required site layout.
- If the mats are installed on sloping ground, anchor pins may be used to stop them migrating downhill with use. **WARNING! Ensure there are no buried services before hammering in anchor pins.**

### USE & MAINTENANCE

- MaxiTrack trackways are for use by wheeled or rubber tracked vehicles only. Steel tracked plant should not be used. Digger buckets should not be used to scrape mud off the mats as this will cause damage.
- In use, the mats will protect the immediate surface from wear, provided the underlying ground will support the load imposed on it. When protecting sensitive ground, the mats should be periodically lifted to inspect the ground conditions beneath.
- Mats can be cleaned with a pressure washer, with detergent if needed.

### UPLIFTING

- The Speed Brace tool may be configured with the brace at right angles to the extension shaft, thus providing extra leverage for undoing tight bolts.

# MaxiTrack

INSTRUCTIONS FOR  
MAXITRACK WITH  
SMARTGRIP™  
TREAD.

## CONFIGURATIONS

### ROADWAYS:

Mats should be laid in straight runs. Place your first mat with the short edge against the right hand side of the roadway and the long edge with the underlapping lip pointing away from you. Place the second mat with the overlapping flange over the first mat's underlapping flange and connect together with the special shoulder bolts. Check that you are on course and install a third mat in the same manner.

This has now established your roadway in a straight direction, and you can now start the second row by joining mats to the short edges of the first three mats. Thereafter, mats may be placed side by side as you build out along the length of the roadway.

### CAR PARKS AND PAD AREAS:

Careful planning and preparation will have a huge effect on the durability of your temporary car park. Remember that the rain that falls on the mats has to go somewhere. Ideally, you do not want it to run into the gaps between mats as it will cause mud to ooze out. If possible, select a slightly sloping area for your car park. Build up any low spots with infill, and cover the area with a layer of woven geotextile membrane.

For pad areas, mats are best installed in a half overlapping brick-bond pattern. Set out a string line along the lower edge of the pad and install the first row of mats in a straight line against this, with the underlapping flanges away from the string line. Then install a half mat to the start of the second row, followed by whole mats and another half mat at the end of the row. Start the third row with a whole mat, and so on. **If you have to branch out to the side of the main pad it is important to set another string line.**

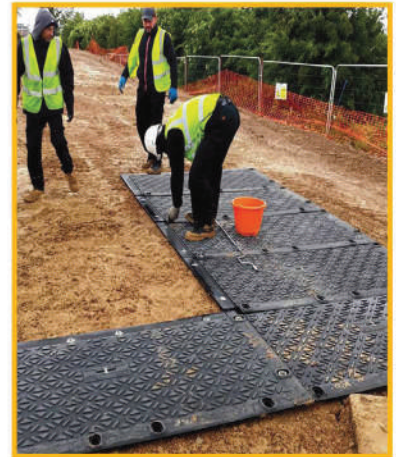
By working from **bottom to top** of the slope, the overlapping flanges will help to shed the rainfall downhill over the top of the mats rather than down between them, similar to the tiles on a roof. Ensure you have adequate provision for dispersing the water run-off at the bottom of the pad area.



MaxiTrack mats can be half staggered to fit the required space



Connect using speed brace or impact wrench



Build trackway uphill if possible

14	13
12	11
10	9
8	7
6	3
5	2
4	1

Order of installation for roadways

44	43	42	41	40	39	38	37	36
35	34	33	32	31	30	29	28	27
26	25	24	23	22	21	20		
19	18	17	16	15	14			
13	12	11	10	9	8	7		
6	5	4	3	2	1			

String Line



Store pallets on firm level ground

String Line

Order of installation for car parks and pad areas, working uphill from the bottom of the slope